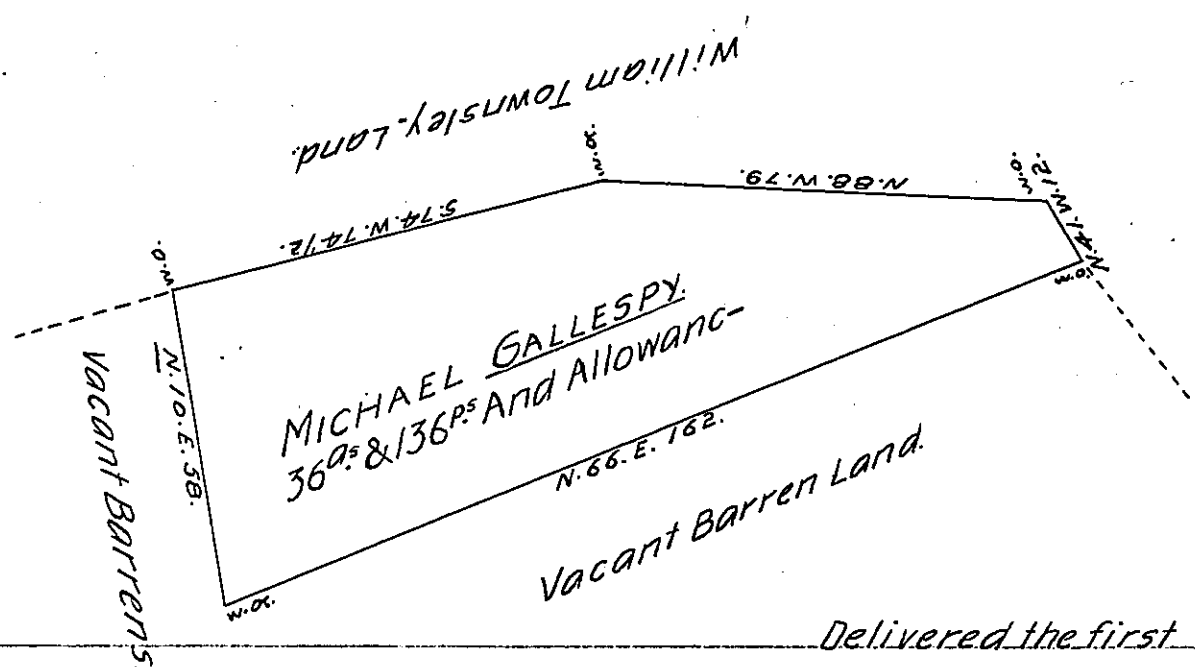


C. & Di <sup>s</sup>	N.	S.	E.	W.	Lt.	Ds.	E.P.	W.P.
S. 74. W. 74 1/2.		20.6		715	77.8	135.0		9652.50
S. 10. E. 58.		57.1	10.9		57.2	57.2	583.44	
N. 66. E. 162.	65.9		148.0		000.0	65.9	9753.20	
N. 41. W. 12.	9.1			7.9	65.9	140.9		1113.11
N. 88. W. 79	2.8			78.9	75.0	152.8		12055.92

77.8 777 1582 1583 778 1033664 2282153  
 1033664 1248489  
 1696) 624244 (36  
 5088  
 11544  
 10176  
 1368

152.8 135.0 57.2 148.0 140.9  
 78.9 71.5 10.2 65.9 7.9  
 1375.2 675.0 114.4 133.20 126.81  
 1222.4 135.0 572.0 740.0 986.3  
 1069.6 945.0 583.44 888.0 1113.11  
 12055.92 963.250



Delivered the first  
 Return to Jacob Grove which  
 is said to be lost or mislaid.

Surveyd April 25<sup>th</sup> 1775 by a Warrant fr. 30<sup>as</sup> Dated April 15<sup>th</sup> 1784.

IN TESTIMONY that the above is a copy of the original remaining on file in the Department of Internal Affairs of Pennsylvania, made conformably to an Act of Assembly approved the 16th day of February, 1833, I have hereunto set my Hand and caused the Seal of said Department to be affixed at Harrisburg, this first day of November 1904.

*Loac R. P. ...*  
 Secretary of Internal Affairs.